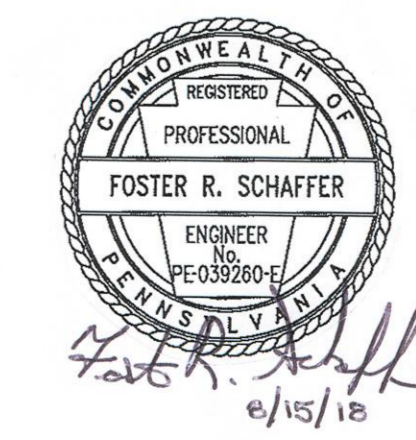
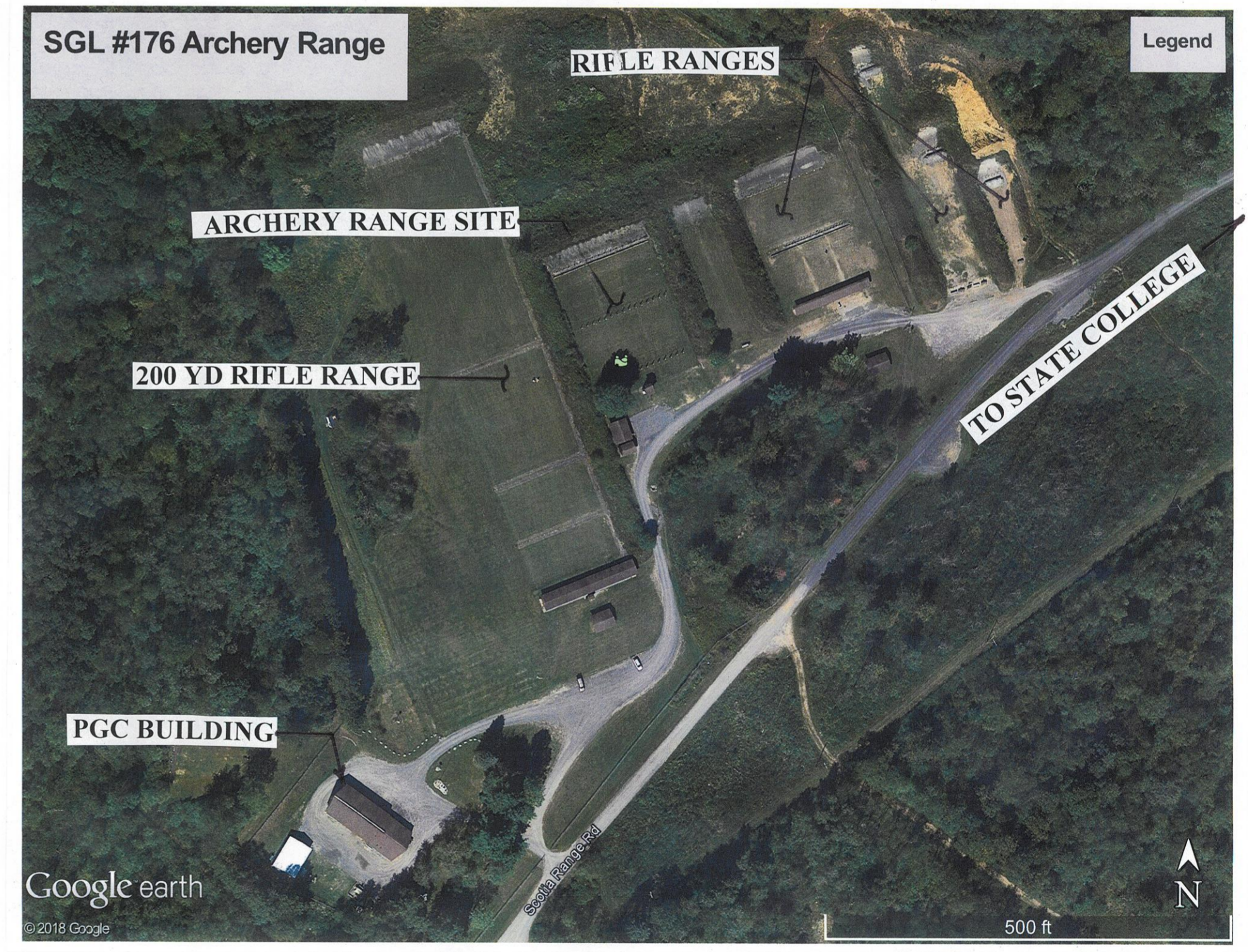


SCOPE OF PROJECT

1. Mow the grass if necessary to provide a suitable work area. Grading and or leveling is not required. The archery range features are to be constructed to match the existing grade and contours at the site.
2. Layout archery range features (parking lot, sidewalks, target holders and shooting station sidewalks) according to the plan dimensions shown on this drawing.
3. Demolish and remove the control tower, distance station uprights, concrete pit and target mechanisms from the site. Refer to plan on Drawing 2 of 3. The electric is disconnected from the control tower and target mechanisms.
4. Strip the sod/soil from the areas where the parking lot, sidewalks and other features are to be constructed. Use the stripped material to fill the area where the concrete pit and target mechanisms were along the sloped backstop. Grade the area smooth and level with the existing range floor.
5. Fabricate target holders and install on the range.
6. Place stone bedding for sidewalks.
7. Place concrete for sidewalks.
8. Place stone around target holders.
9. Install guard posts and mulch median strip.
10. Construct parking area.
11. Seed and mulch disturbed areas.
12. Perform final site clean-up.



PENNSYLVANIA GAME COMMISSION		
STATE GAME LANDS #176	HALF MOON TWP.	CENTRE CO.
ARCHERY RANGE		
LOCATION MAP, SITE PLAN, AERIAL PHOTO AND NOTES		
REVISIONS		
PROJECT NO.	PGC-176-18-1	
DRAWN BY:	FS	
DATE:	8/15/18	
SHEET NO.	1 OF 3	